

PRESS RELEASE

in·ti·ma·cy

Friday, 2 September – Sunday, 25 September 2011

Yavuz Fine Art is pleased to present *in·ti·ma·cy*, a group exhibition featuring new works by Singaporean artists Ahmad Abu Bakar, Erica Lai, Ezzam Rahman, Lester Lee, Sai Hua Kuan, Stella Chang, Stellah Lim, Susie Wong and Tang Ling Nah.

These artists share the investigation of the emotional and philosophical relationship between the safe-harbor of conventions and the need to express an individual identity. Using media such as painting, drawing, video, photography, sculpture or installation, the works expose their individuality while protecting their intimate relationship to the subject itself.

Ahmad Abu Bakar uses the circle as a metaphor for life in his series *Journey of a point to geometry series 16*. In geometry, the point serves as a symbol for unity and source and represents the centre, which is elusive controlling point of all forms. In his search for his artistic originality, Abu Bakar is actually looking for a point of balance for himself, his art and his life.

Erica Lai's series *National Flowers* symbolizes the rise and fall of different countries' political and social rules and how society is transient. Each country's national flower represents the mortality and fatality of their fragile ruling systems.

Ezzam Rahman uses Mattel™ dolls to draw the audience into his world of searching and waiting. The video *Someday my prince will come* is a reflection of his own coping with failed love and the fear that life has passed him by.

Lester Lee questions issues in society with his paintings of dreamy figures with child-like innocence. He subtly explores the factors that influence current affairs, questioning the fundament of human existence; an ongoing process that draws him closer to his own sense of purpose.

In his series *In Studio*, **Sai Hua Kuan** develops various experimental ideas utilizing objects that are commonly seen in his own art studio. His work resists any logical reading by switching between commonality and uniqueness.

Stella Chang explores the gestures of invitation and exclusion, revealing and withholding in her triptych *Invitation to the dance*. The figures reach out to the viewers, inviting them to take a closer look at what they cannot or refuse to see.

Stellah Lim uses her own hair to embroider portraits of her loved ones in her series *Never*, inserting a physical part of herself into the artwork to create a sense of loss and lasting memory.

YAVUZ FINE ART

51 Waterloo Street, #03-01, Singapore 187969 | www.yavuzfineart.com

Opening Hours: Wed – Sat: 10am – 7pm, Sun: 1pm – 5pm | Mon, Tue & Public Holidays by appointment only

Susie Wong's series of portraits *Head Series 2007/22* express the ephemeral nature of corporeality. Emerging, submerging, present, absent, they appear as a result of repetitive handling of charcoal dust over paper.

The impermanent nature of charcoal in **Tang Ling Nah's** series *Contemplating Waterloo* relates to the temporality of things occurring in transitory or in-between spaces. The abstraction of shapes and representation of real architectural spaces in her drawings relate to the tension between "slow" and "fast" spaces; "places" and "non-places; and "familiarity" and "unfamiliarity".

The opening reception for *in·ti·ma·cy* in the presence of the artists will be held on Thursday, 1 September 2011 from 7 – 9pm at Yavuz Fine Art, 51 Waterloo Street, #03-01.

For inquiries please contact Stella Chang at stella@yavuzfineart.com or at (65) 6338 7900.

in·ti·mate / 'in-tə-, māt / *adj*

1 ~-(a) having or being a very close and friendly relationship: *intimate friends* ° *an intimate friendship* ie very close friends *for some time*° (b) (*euph*) having a sexual relationship, esp outside marriage: *She was accused of being intimate with several men.* **2** likely or intended to encourage close relationships, esp sexual ones, typically by being small, quiet and private: *an intimate restaurant, atmosphere.* **3** private and personal: *tell a friend the intimate details of one's life* ° *an intimate diary*, ie one in which sb records private experiences, thoughts, emotions, etc **4** [attri] (*fml*) (of knowledge) detailed and obtained by deep study or long experience: *an intimate knowledge of African religions.* **5** (idm) **be/get on intimate terms (with sb)** (come to) know sb very well and be friendly with him: *We're not exactly on intimate terms, but we see each other fairly often.*

in·ti·ma·cy /2 September - 25 September 2011/

Ahmad Abu Bakar : Erica Lai : Ezzam Rahman : Lester Lee : Sai Hua Kuan : Stella Chang : Stellan Lim : Susie Wong : Tang Ling Nah

in·tim·i·date /in-'ti-mə-, dāt/ *verb*

to make timid or fearful : *frighten; especially* : to compel or deter by or as if by threats (*tried to intimidate a witness*) **in·tim·i·dat·ing** *adj* frightening, esp because of seeming difficulty or impossibility : *The intimidating bulk of Mt Everest rose up before the climbers.* **in·tim·i·da·tion** *noun* intimidating or being intimidated: *give way to intimidation* ° *keep people in order by intimidation.* **in·tim·i·da·tory** *adj* tending to intimidate: *intimidatory tactics.* ORIGIN mid 17th cent.: from medieval Latin *intimidat-* 'made timid,' from the verb *intimidare* (based on *timidus*)

YAVUZ FINE ART

51 Waterloo Street, #03-01, Singapore 187969 | www.yavuzfineart.com

Opening Hours: Wed – Sat: 10am – 7pm, Sun: 1pm – 5pm | Mon, Tue & Public Holidays by appointment only



Ahmad Abu Bakar, Journey of a Point to Geometry Series 16



Erica Lai, National Flowers



Ezzam Rahman, Someday My Prince Will Come

YAVUZ FINE ART

51 Waterloo Street, #03-01, Singapore 187969 | www.yavuzfineart.com
Opening Hours: Wed - Sat: 10am - 7pm, Sun: 1pm - 5pm | Mon, Tue & Public Holidays by appointment only



Sai Hua Kuan, In Studio



Stella Chang, Invitation to the Dance

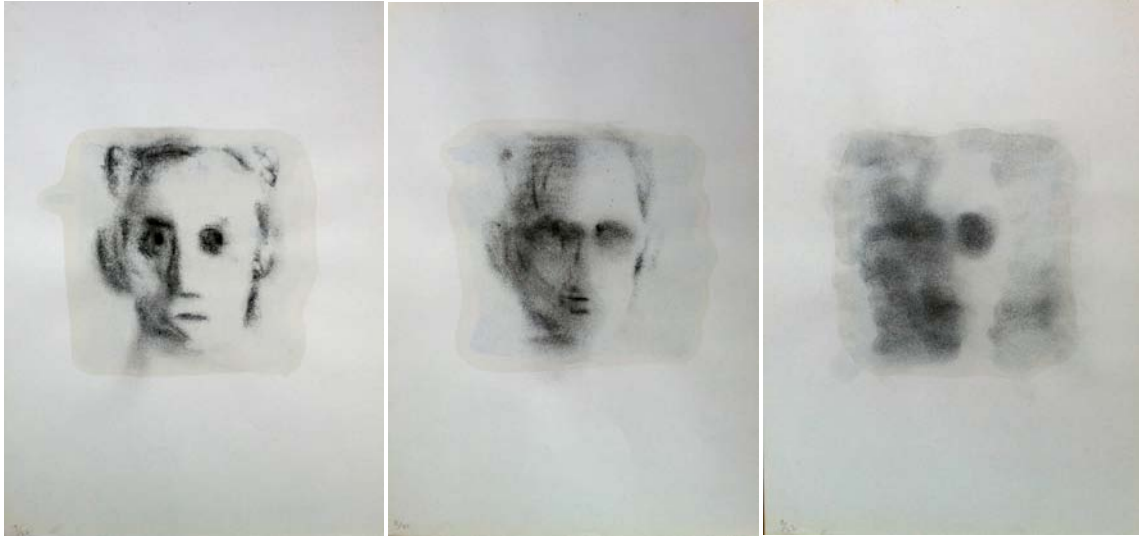


Stellah Lim, Never

YAVUZ FINE ART

51 Waterloo Street, #03-01, Singapore 187969 | www.yavuzfineart.com

Opening Hours: Wed – Sat: 10am – 7pm, Sun: 1pm – 5pm | Mon, Tue & Public Holidays by appointment only



Susie Wong, Head series 2007/22



Tang Ling Nah, Contemplating Waterloo

YAVUZ FINE ART

51 Waterloo Street, #03-01, Singapore 187969 | www.yavuzfineart.com

Opening Hours: Wed – Sat: 10am – 7pm, Sun: 1pm – 5pm | Mon, Tue & Public Holidays by appointment only